

Donlin Gold Project EIS - Infrastructure

Bethel Port

Donlin Gold, LLC estimates that about 16 ocean barge loads in a 110-day season each year be transported to Bethel, then transferred to river barges. Transfer and storage facilities would occupy about 16 acres.

Jungjuk Barge Landing

The project design calls for a new barge landing on the Kuskokwim River. Proposed facilities include:

- Barge ramp
- Container handling equipment
- Seasonal storage for fuel & equipment



Simulation: Donlin Gold, LLC

Simulation of Jungjuk Barge Landing

The dock area would take up about 5 acres. On the river, residents could expect to see three barge-trains pass each day of the barge season. (One up and two down, or two up and one down - river.)

Road

Connecting the barge landing with the minesite would be a 30-mile, two lane, gravel road, to be used solely for mine support traffic. Road construction materials would be excavated from about 20 sites along the roadway.

Fuel Storage

The project design includes 40 million gallons of fuel storage in fifteen 2.5-million-gallon tanks at the power plant site.



Simulation: Donlin Gold, LLC

Typical Fuel Storage

Airstrip

A 5,000-foot gravel airstrip is proposed, about 9 road miles west of the minesite. The airstrip would include two 13,000 gallon aviation fuel tanks and one 5,000 gallon diesel fuel tank.

Camp

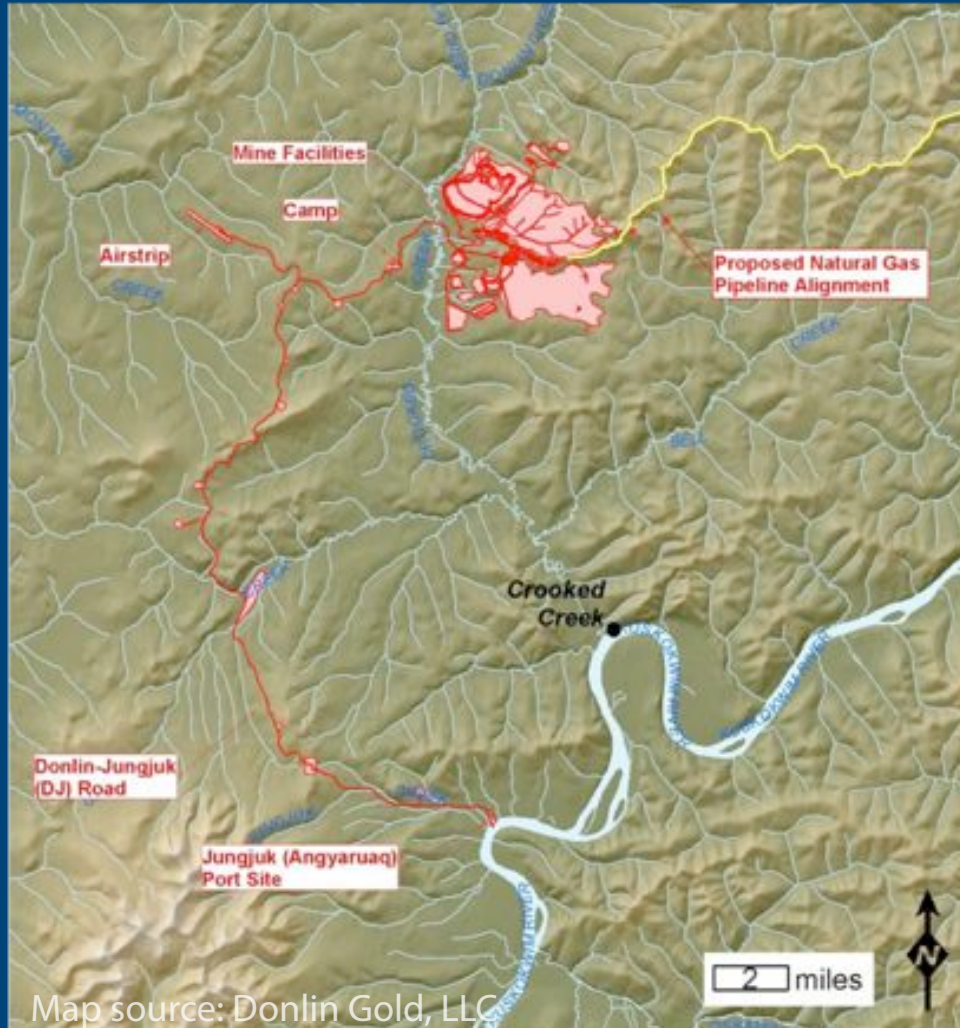
Worker housing would be provided in the form of a permanent 600-bed camp about 2.4 miles from the minesite.

- 6 stand-alone, three-story dormitories
- 1 stand-alone, single-story core services building
- Kitchen, dining room, exercise & recreation rooms



photo: Donlin Gold, LLC

Current (Exploration) Camp



Map source: Donlin Gold, LLC

The proposed minesite, airstrip, barge landing, and road in relation to the Kuskokwim River and the village of Crooked Creek.

