

Donlin Gold Project EIS - Minesite

The proposed minesite would develop over time. These simulated images illustrate what the minesite would look like at various stages of the project.

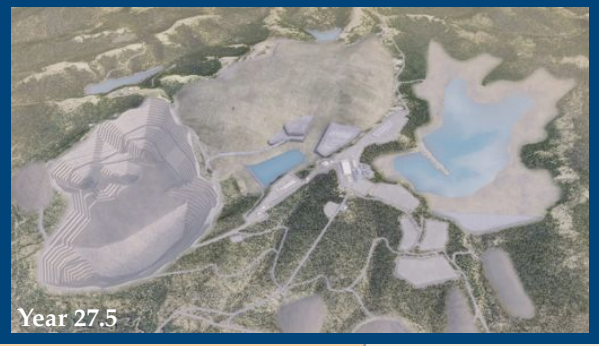


Year 0: Construction completed, lined waste treatment facility (tailings storage) in place. Mining begins, with initial pit excavations.

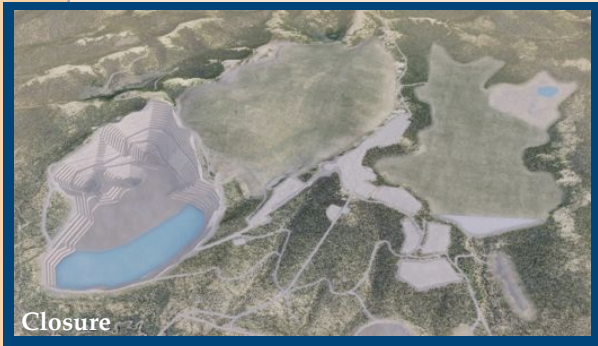
Year 15: Pit, waste treatment facility (tailings storage) & waste rock facility at about half of ultimate extent. Concurrent reclamation is shown.



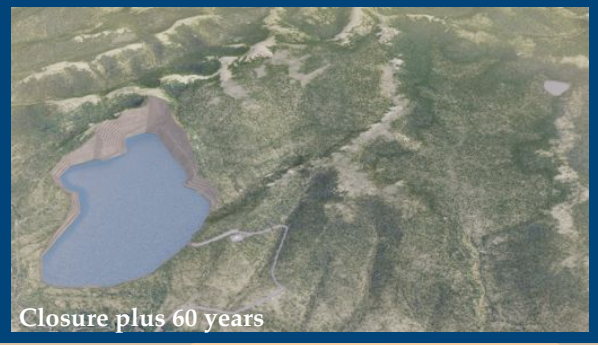
Year 27.5: Expected end of mining activities.



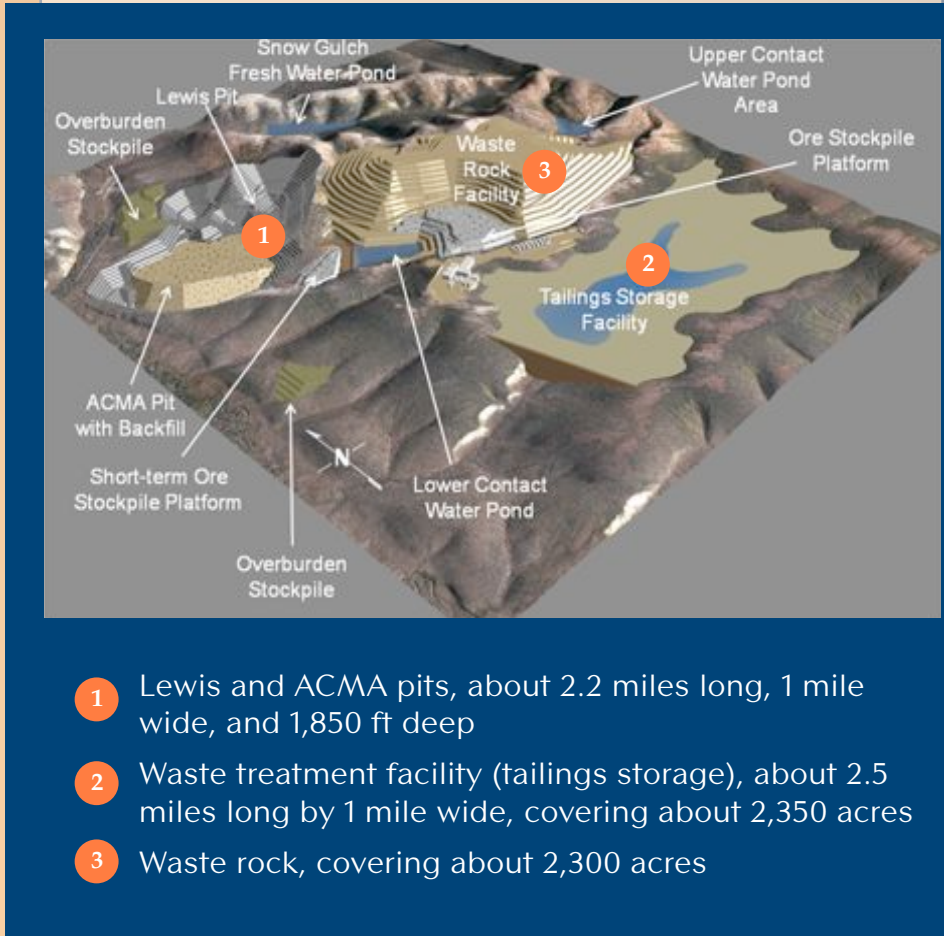
Closure & Reclamation: Reclamation & revegetation of waste treatment facility (tailings storage) and waste rock facility. Pit lake begins to fill.



Closure plus 60 years: Pit lake is full; vegetation in reclaimed areas is mature.



Donlin Camp, 2012



- 1 Lewis and ACMA pits, about 2.2 miles long, 1 mile wide, and 1,850 ft deep
- 2 Waste treatment facility (tailings storage), about 2.5 miles long by 1 mile wide, covering about 2,350 acres
- 3 Waste rock, covering about 2,300 acres



photo: Dave Cannon