



US Army Corps of Engineers Donlin Gold Project EIS

Comment Form

The Corps welcomes your comments on the Draft Environmental Impact Statement. If you'd like to mail your comments, please feel free to use this form. Write your comments below then fold this page in thirds so the mailing address shows. Additional pages can be inserted. Remember to affix first class postage. You can also email your comments to POA.donlingoldeis@usace.army.mil, or fax them to (907) 753-5567.

Important topics for comments would include:

- Comments and questions about the accuracy of information in the Draft EIS.
- Comments and questions about the adequacy of methods or assumptions used.
- New information to be considered in preparing the Final EIS.
- New reasonable alternatives or revisions to current alternatives.
- Additional measures to reduce impacts (mitigation).

*Very excited
project for
Region 10.*

details of the

I support Alternative 2 primarily because of the natural gas pipeline proposal. Impacts of the Iditarod trail will be minimal, and the benefits of the region will be great. ^{-jobs & economy} Alternative 2 contains appropriate barging plans, but the draft EIS, mischaracterizes barge traffic. Alternative 2 is the preferred alternative because mitigation of impacts is clearly described. Not all mining projects will result in the worst case scenario. I firmly believe that an HIA based approach to address human health issues is a horrible approach and is easily misconstrued and misapplied. The EIS should be guided by and focus on the specific issues identified during scoping as required by NEPA.

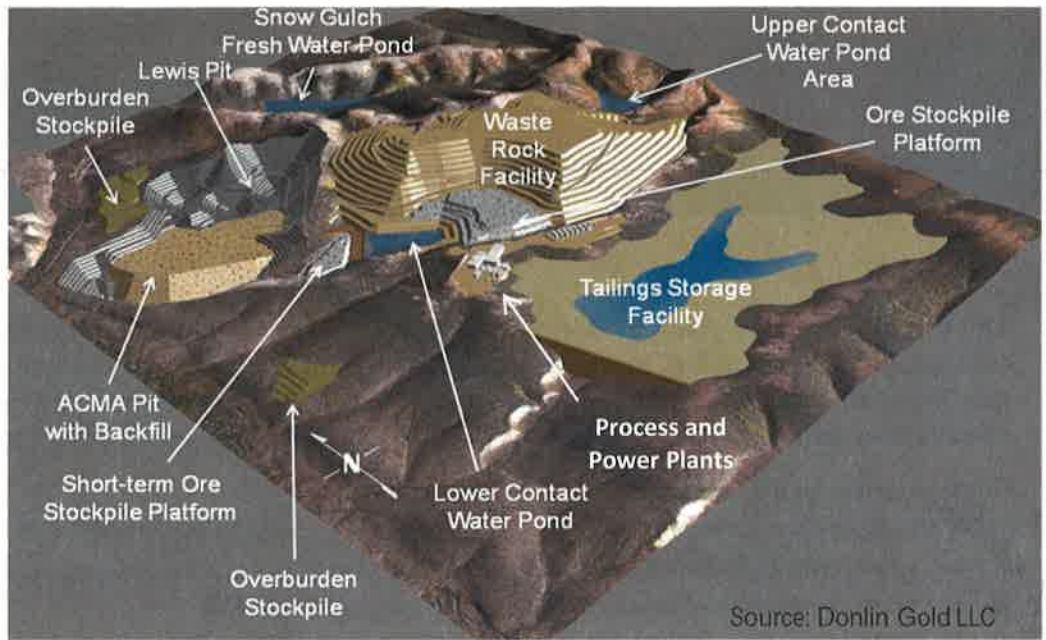
Lorali Simon



Layout of Proposed Mine Site

The image to the right illustrates the eventual layout of a proposed gold mine, ten miles north of the community of Crooked Creek on the Kuskokwim River in southwestern Alaska, for which the US Army Corps of Engineers is preparing an EIS. The project, proposed by Donlin Gold, LLC, includes a natural gas pipeline and transportation and components. You may use this mail-in form to submit comments.

For more information, please visit:
www.DonlinGoldEIS.com



↘ (fold here)



(To mail, fold below blue line. Photo: Gava Cannon)

Keith Gordon
 Regulatory Division
 US Army Corps of Engineers
 CEPOA-RD-Gordon, PO Box 6898
 Joint Base Elmendorf Richardson, AK
 99506-0898

Please place
 first-class
 postage here.



from: