



Comment Form

The Corps welcomes your comments on the Draft Environmental Impact Statement. If you'd like to mail your comments, please feel free to use this form. Write your comments below then fold this page in thirds so the mailing address shows. Additional pages can be inserted. Remember to affix first class postage. You can also email your comments to POA.donlingoldeis@usace.army.mil, or fax them to (907) 753-5567.

Important topics for comments would include:

- Comments and questions about the accuracy of information in the Draft EIS.
- Comments and questions about the adequacy of methods or assumptions used.
- New information to be considered in preparing the Final EIS.
- New reasonable alternatives or revisions to current alternatives.
- Additional measures to reduce impacts (mitigation).

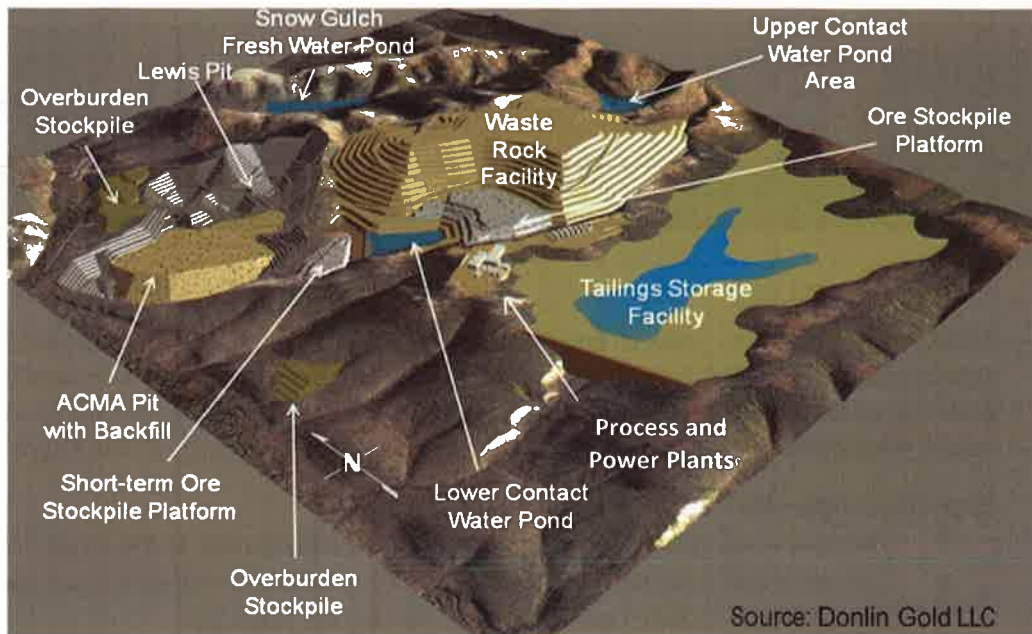
- Diesel: If there is a big diesel spill - its cleaned up, but effects of it remains. Is there another solution or way to make absolutely sure no harm has been done to marine life or animals. Seeping diesel or gas into ground, no one for certain can clean this up.
- Once a pit is in placed, it will always remain. This is a disturbance to natural wildlife, marine life, & may cause of reduction in either due to the stress of having someone, something come into their surroundings.
- If waters remain low, no barges, boats can access the waters, then what?
 - I oppose this Donlin Gold Project EIS!



Layout of Proposed Mine Site

The image to the right illustrates the eventual layout of a proposed gold mine, ten miles north of the community of Crooked Creek on the Kuskokwim River in southwestern Alaska, for which the US Army Corps of Engineers is preparing an EIS. The project, proposed by Donlin Gold, LLC, includes a natural gas pipeline and transportation and components. You may use this mail-in form to submit comments.

For more information, please visit:
www.DonlinGoldEIS.com



→ (fold here)



(To mail, fold below blue line. Photo: Dave Cannon)

99506-0898

Keith Gordon
 Regulatory Division
 US Army Corps of Engineers
 CEPOA-RD-Gordon, PO Box 6898
 Joint Base Elmendorf Richardson, AK

Please place
 first-class
 postage here.



from: