



US Army Corps of Engineers Donlin Gold Project EIS

Comment Form

The Corps welcomes your comments on the Draft Environmental Impact Statement. If you'd like to mail your comments, please feel free to use this form. Write your comments below then fold this page in thirds so the mailing address shows. Additional pages can be inserted. Remember to affix first class postage. You can also email your comments to POA.donlingoldeis@usace.army.mil, or fax them to (907) 753-5567.

Important topics for comments would include:

- Comments and questions about the accuracy of information in the Draft EIS.
- Comments and questions about the adequacy of methods or assumptions used.
- New information to be considered in preparing the Final EIS.
- New reasonable alternatives or revisions to current alternatives.
- Additional measures to reduce impacts (mitigation).

1. I want it to go on because this is a cool thing to get gold from this site, what would it do to the environment; if it's good im in it.

2. And if i don't want it to go on that it might affect the environment and that's why.

3 The person who's doing this project of Donlin gold project EIS told me this can cost millions of dollars of 5million.

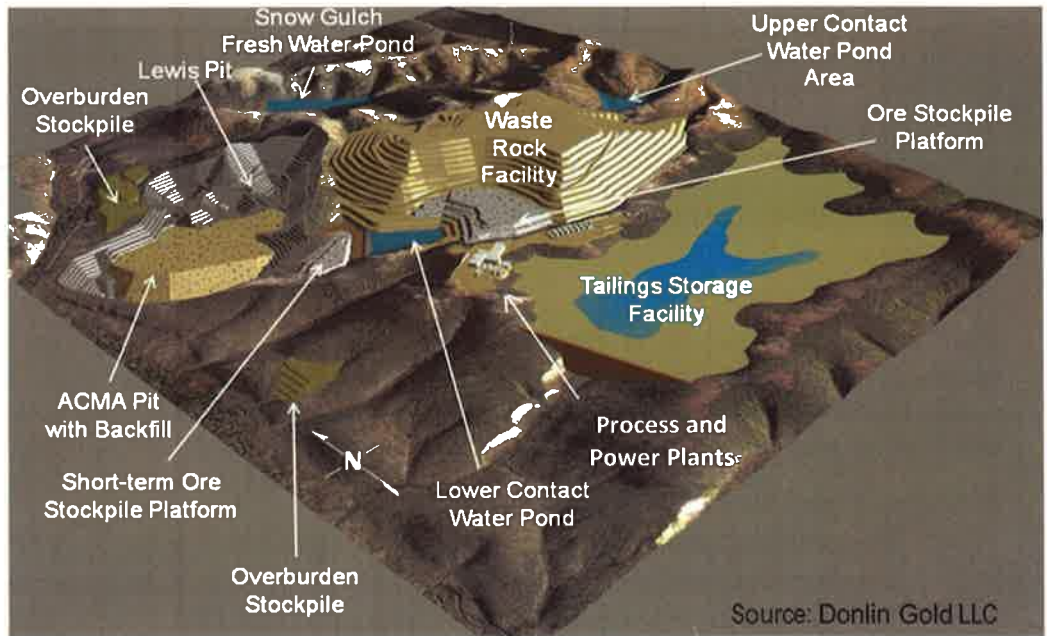
4 what if the environment is bad to work in, and why is the project going on, what if the gold isn't ther



Layout of Proposed Mine Site

The image to the right illustrates the eventual layout of a proposed gold mine, ten miles north of the community of Crooked Creek on the Kuskokwim River in southwestern Alaska, for which the US Army Corps of Engineers is preparing an EIS. The project, proposed by Donlin Gold, LLC, includes a natural gas pipeline and transportation and components. You may use this mail-in form to submit comments.

For more information, please visit:
www.DonlinGoldEIS.com



↘ (fold here)



(To mail, fold below blue line. Photo: Dave Cannon)

Keith Gordon
 Regulatory Division
 US Army Corps of Engineers
 CEPOA-RD-Gordon, PO Box 6898
 Joint Base Elmendorf Richardson, AK
 99506-0898

Please place
 first-class
 postage here.



from: