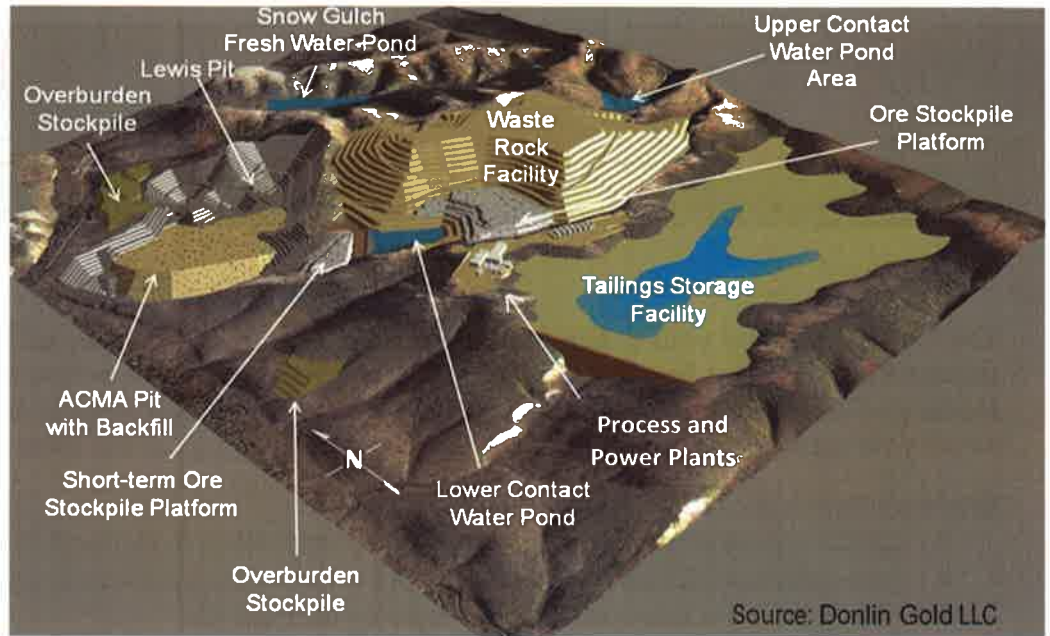


Layout of Proposed Mine Site

The image to the right illustrates the eventual layout of a proposed gold mine, ten miles north of the community of Crooked Creek on the Kuskokwim River in southwestern Alaska, for which the US Army Corps of Engineers is preparing an EIS. The project, proposed by Donlin Gold, LLC, includes a natural gas pipeline and transportation and components. You may use this mail-in form to submit comments.

For more information, please visit:
www.DonlinGoldEIS.com



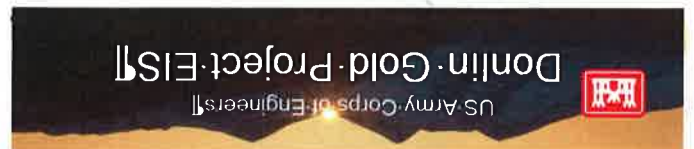
→(fold here)



(To mail, fold below blue line. Photo: Dave Cannon)

Keith Gordon
 Regulatory Division
 US Army Corps of Engineers
 CEP/A-RD-Gordon, PO Box 6898
 Joint Base Elmendorf Richardson, AK
 99506-0898

Please place
 first-class
 postage here.



from: