

# Donlin Gold Project Environmental Impact Statement Project Update

*Keith Gordon, US Army Corps of Engineers*

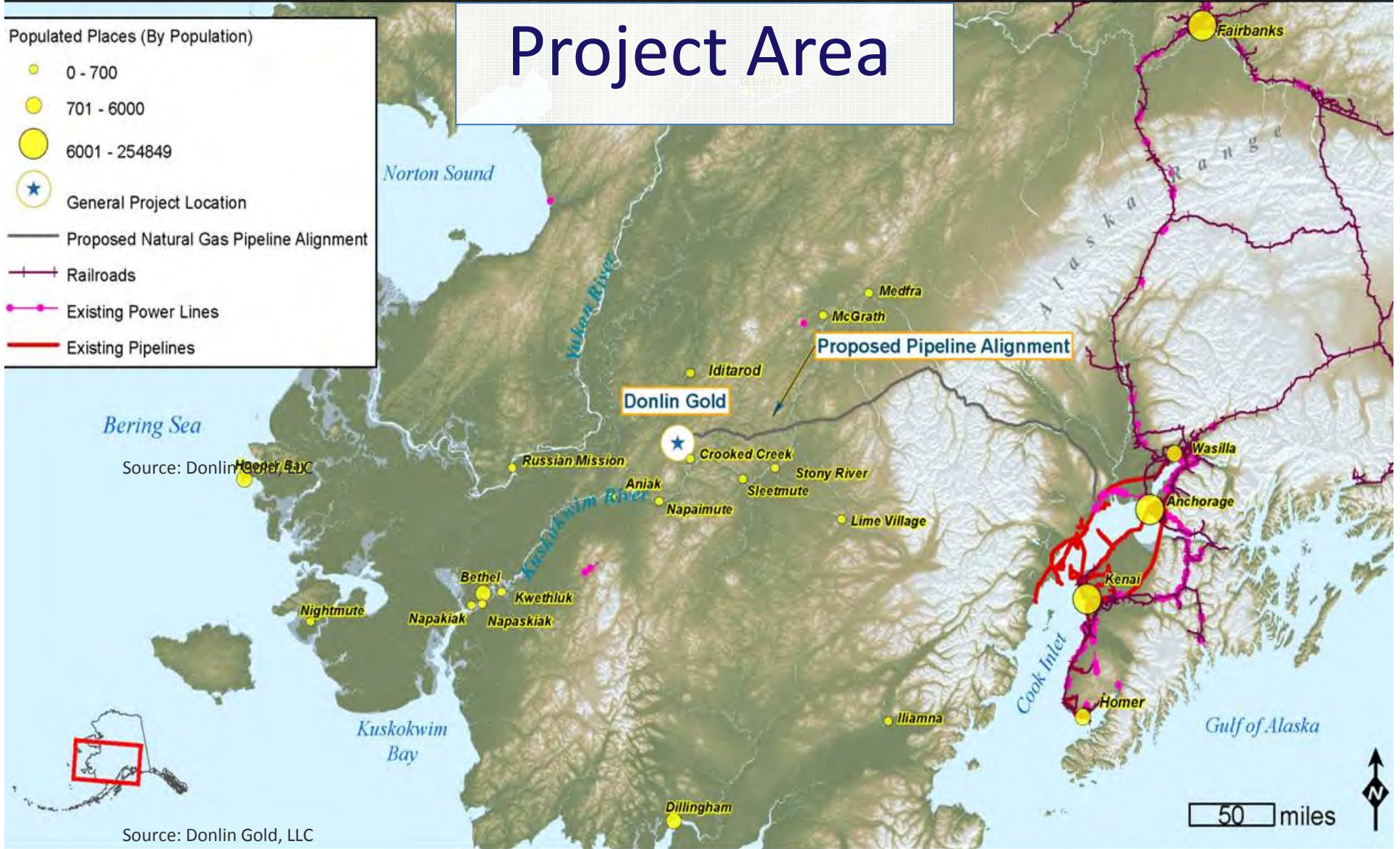
AVCP Annual Meeting  
October 9, 2013



# Project Area

## Populated Places (By Population)

- 0 - 700
- 701 - 6000
- 6001 - 254849
- ★ General Project Location
- Proposed Natural Gas Pipeline Alignment
- Railroads
- Existing Power Lines
- Existing Pipelines

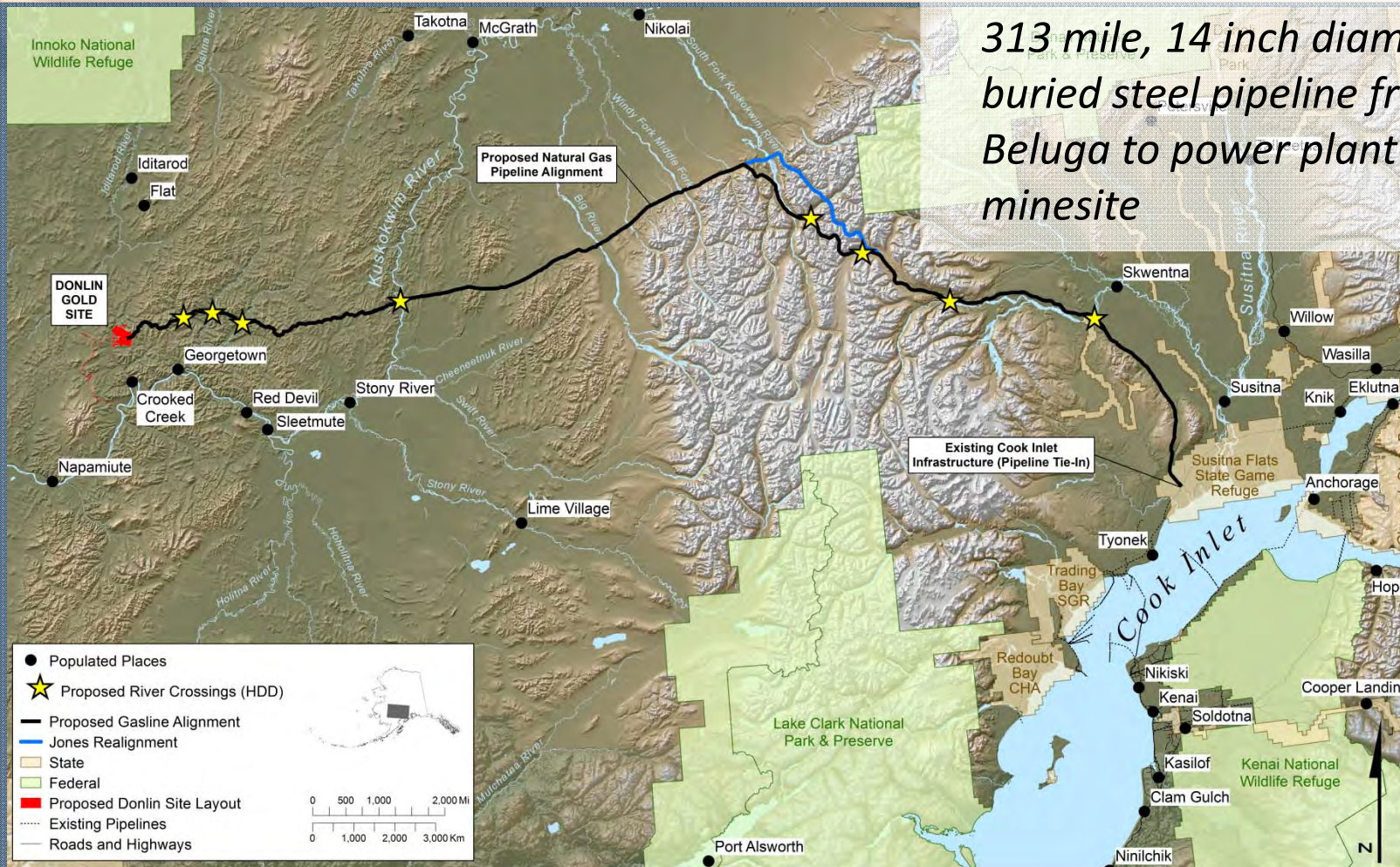


Source: Donlin Gold, LLC

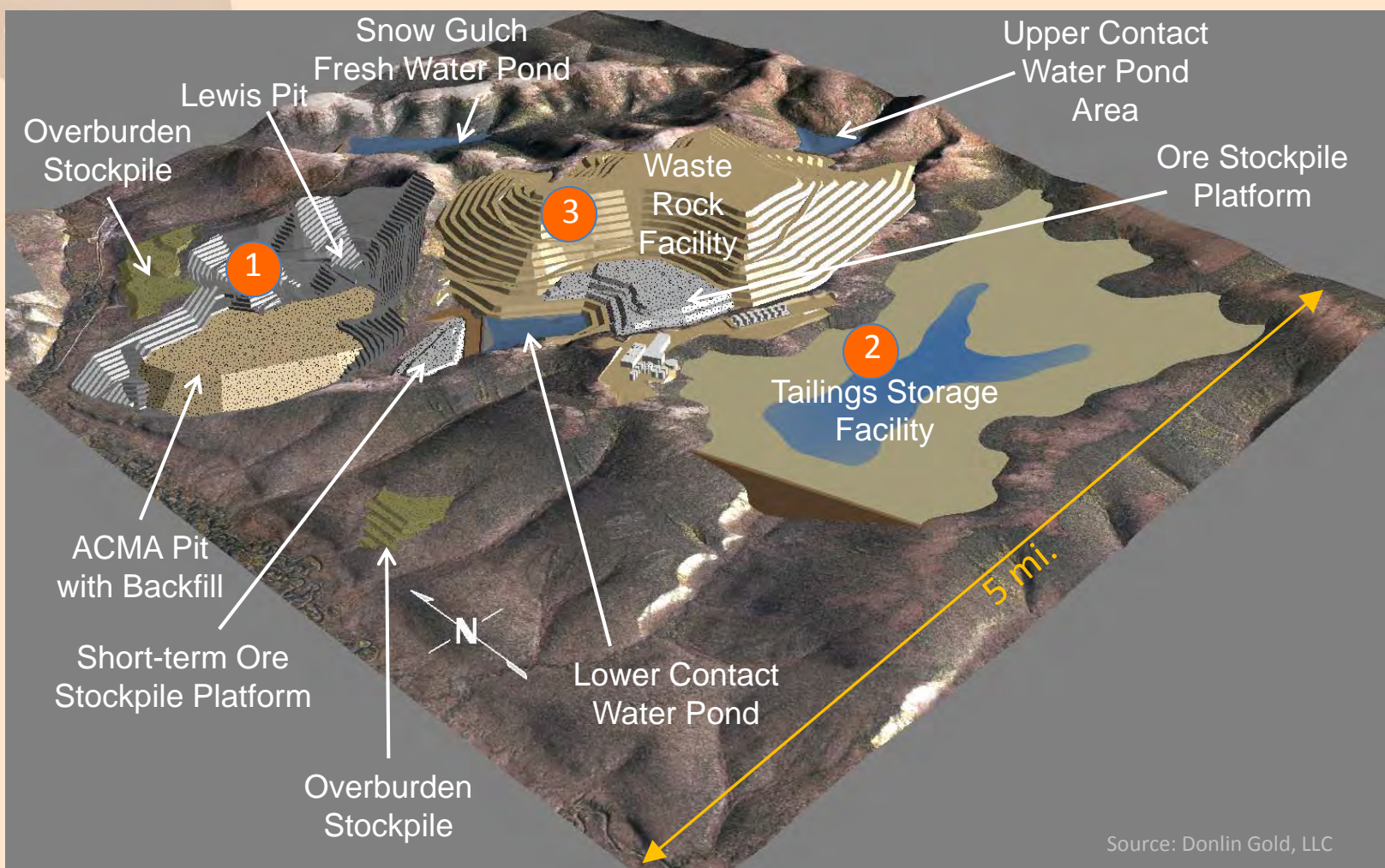
Source: Donlin Gold, LLC



# Pipeline Route



# Mine Site Layout



Source: Donlin Gold, LLC



# Public Comments Highlights

- Barge Traffic
- Subsistence Traditions
- Water quality, quantity, and flow
- Mercury
- Fish, Wildlife, and Birds
- People and Communities
- Health Impacts





# Alternatives in the Donlin EIS

- NEPA requires review of reasonable range of alternatives.
- Scoping comments identified environmental issues.
- Design alternatives are developed, based on potential to reduce impacts.
- The EIS compares the relative impacts of the various alternatives.



# Alternatives Examples

<b>Scoping Issue Goal: Reduce Barge Impacts</b>	<b>Design Option/Alternative</b>	<b>Feasible?</b>
Shorten the barge route	Barge to Birch Tree Crossing and truck from there – eliminates 69 river miles	Yes
Change transportation mode	Build road to haul diesel, equipment, and materials to mine site	No
Reduce volume of diesel to be barged	Use mining trucks and equipment powered by LNG instead of diesel	Yes

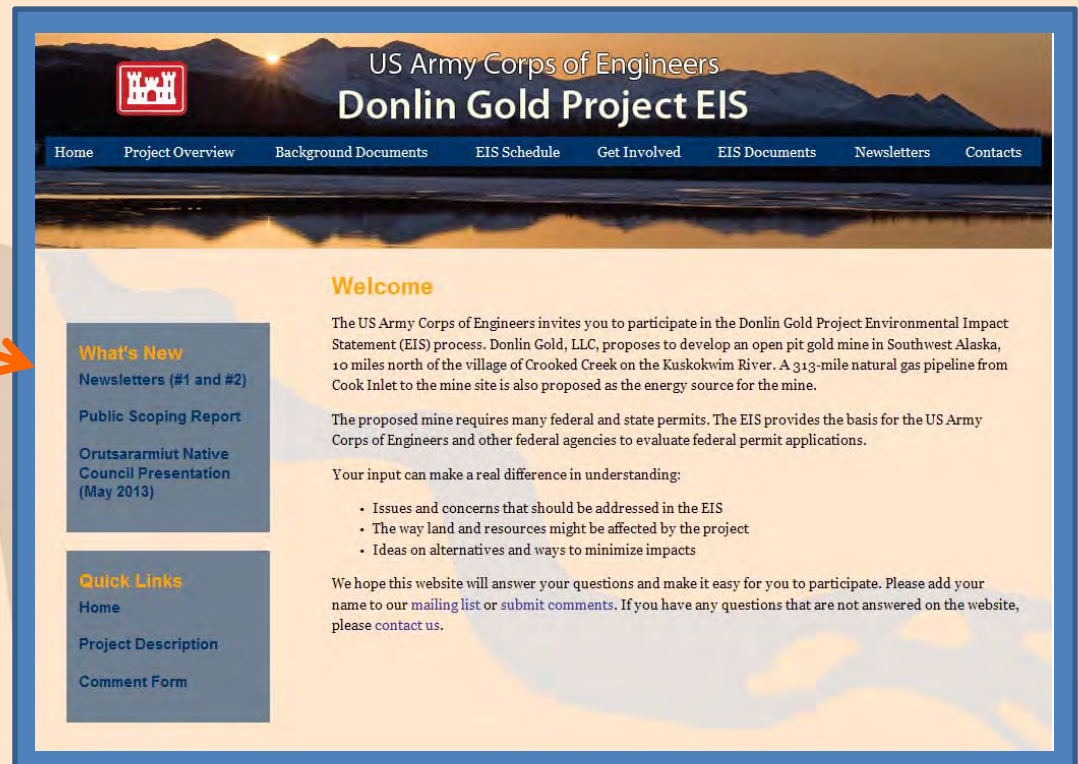


# Learn More

Website:  
[www.DonlinGoldEIS.com](http://www.DonlinGoldEIS.com)

- 2<sup>nd</sup> Newsletter
- Scoping Report
- Draft EIS in 2014

Contact:



US Army Corps of Engineers  
**Donlin Gold Project EIS**

Home Project Overview Background Documents EIS Schedule Get Involved EIS Documents Newsletters Contacts

### Welcome

The US Army Corps of Engineers invites you to participate in the Donlin Gold Project Environmental Impact Statement (EIS) process. Donlin Gold, LLC, proposes to develop an open pit gold mine in Southwest Alaska, 10 miles north of the village of Crooked Creek on the Kuskokwim River. A 313-mile natural gas pipeline from Cook Inlet to the mine site is also proposed as the energy source for the mine.

The proposed mine requires many federal and state permits. The EIS provides the basis for the US Army Corps of Engineers and other federal agencies to evaluate federal permit applications.

Your input can make a real difference in understanding:

- Issues and concerns that should be addressed in the EIS
- The way land and resources might be affected by the project
- Ideas on alternatives and ways to minimize impacts

We hope this website will answer your questions and make it easy for you to participate. Please add your name to our [mailing list](#) or [submit comments](#). If you have any questions that are not answered on the website, please contact us.

**What's New**  
Newsletters (#1 and #2)  
Public Scoping Report  
Orutsaramiut Native Council Presentation (May 2013)

**Quick Links**  
Home  
Project Description  
Comment Form

*Don Kuhle, EIS Project Manager • 907-753-2780 [Don.P.Kuhle@usace.army.mil](mailto:Don.P.Kuhle@usace.army.mil)*

*Amanda Shearer, Tribal Liaison • 907-753-5674*

*[Amanda.M.Shearer@usace.army.mil](mailto:Amanda.M.Shearer@usace.army.mil)*

